

**Grand Champions Villas
Central Air Conditioner Specifications
Plan 2 Upper Floor Units Only**

Prior to installing a central air conditioner at Grand Champions Villas the Owner of the condominium, must fill out all of the Remodeling Category III forms and receive approval from the Board President.

The air conditioner and the installation must meet the following specifications:

BRAND: Fujitsu

MODEL #: AOU48RLXFZ

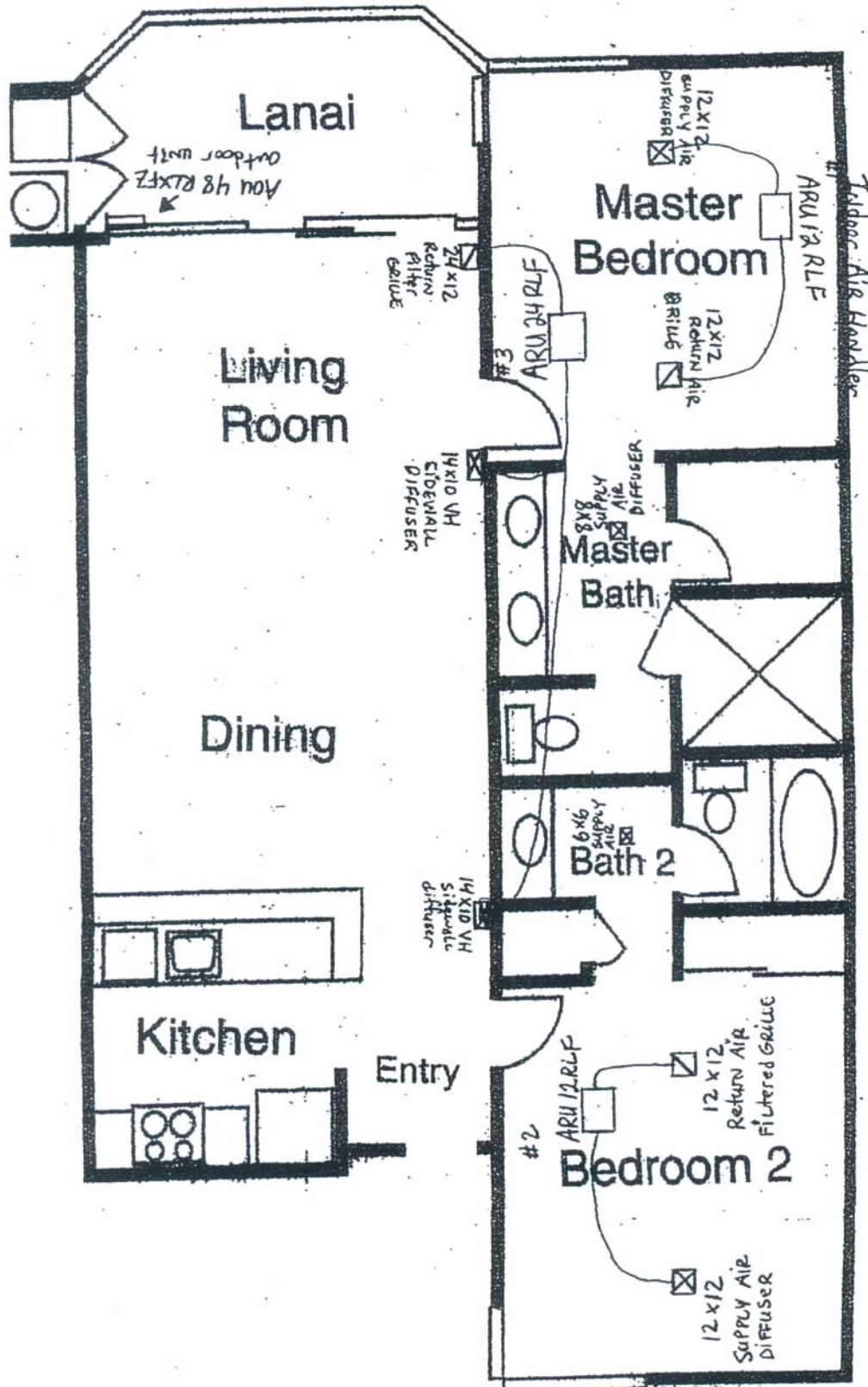
AIR HANDLER: ARU9, 12RLF

COLOR: Gray

INSTALLATION: Three (3) air handlers will be mounted with vibration isolators in attic space and all will thread in the attic space. Fujitsu Condensing Unit installed on the lanai next to closet. The emergency shut-off must be mounted at or below the height of the condenser. The Freon lines will be run in the lanai closet and over into the attic. Drain Lines must be installed are to drain run off the lanai and down the side of building per Resident Managers specifications.

Please see the attached diagram.

LIABILITY: Any damage as a result of the installation of a central air conditioner, including but not limited to water damage to the property below, will be the responsibility of the owner of the installed air conditioner.



(not to scale)